

EL AL

Israel Airlines Ltd.

Q1-11



Consolidated Statements of Operations

(in millions USD)

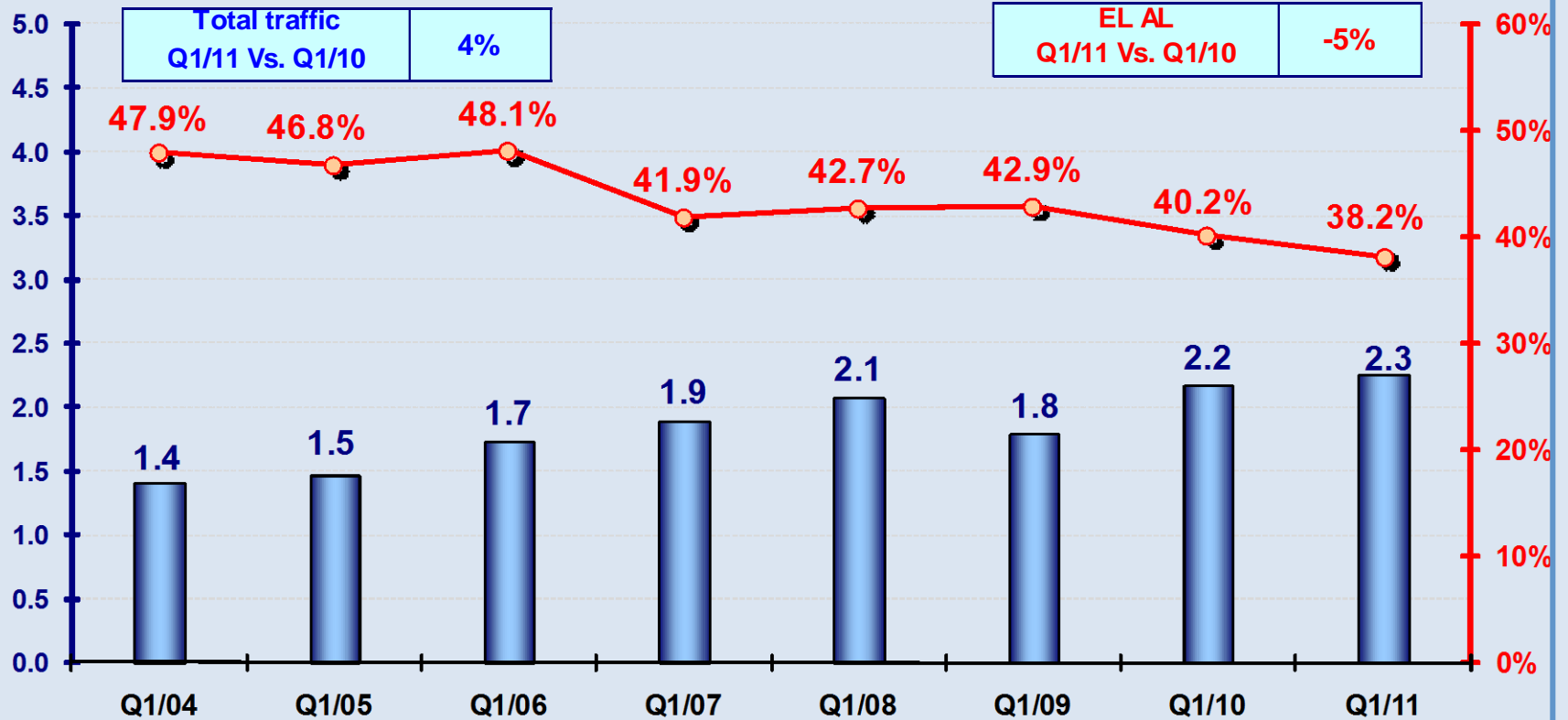
	Q1/11		Q1/10		Q1/11 Vs. Q1/10	
	\$	% of operating revenues	\$	% of operating revenues	difference	%
Operating revenues	425.2	100%	423.2	100%	2.0	0%
Operating expenses	403.4	94.9%	363.6	85.9%	39.8	11%
Gross profit	21.8	5.1%	59.6	14.1%	(37.8)	-63%
Selling expenses	44.9	10.6%	48.6	11.5%	(3.6)	-7%
General and administr. Expenses	24.3	5.7%	23.9	5.6%	0.5	2%
Other expenses ,net	6.0	1.4%	1.9	0.4%	4.1	219%
Operating loss	(53.5)	-12.6%	(14.7)	-3.5%	(38.8)	264%
Net financing expenses (income)	(1.2)	-0.3%	7.1	1.7%	(8.3)	
Loss before income tax	(52.3)	-12.3%	(21.8)	-5.2%	(30.4)	139%
Income Tax savings	(9.3)	-2.2%	(5.3)	-1.3%	(4.0)	
Loss for the period	(42.9)	-10.1%	(16.5)	-3.9%	(26.4)	160%

EL AL & Sun D'or (scheduled+charter) share in total traffic at BGA

for quarter Q1 in years 2004-2011

total traffic (mill. - per passeng. Leg)

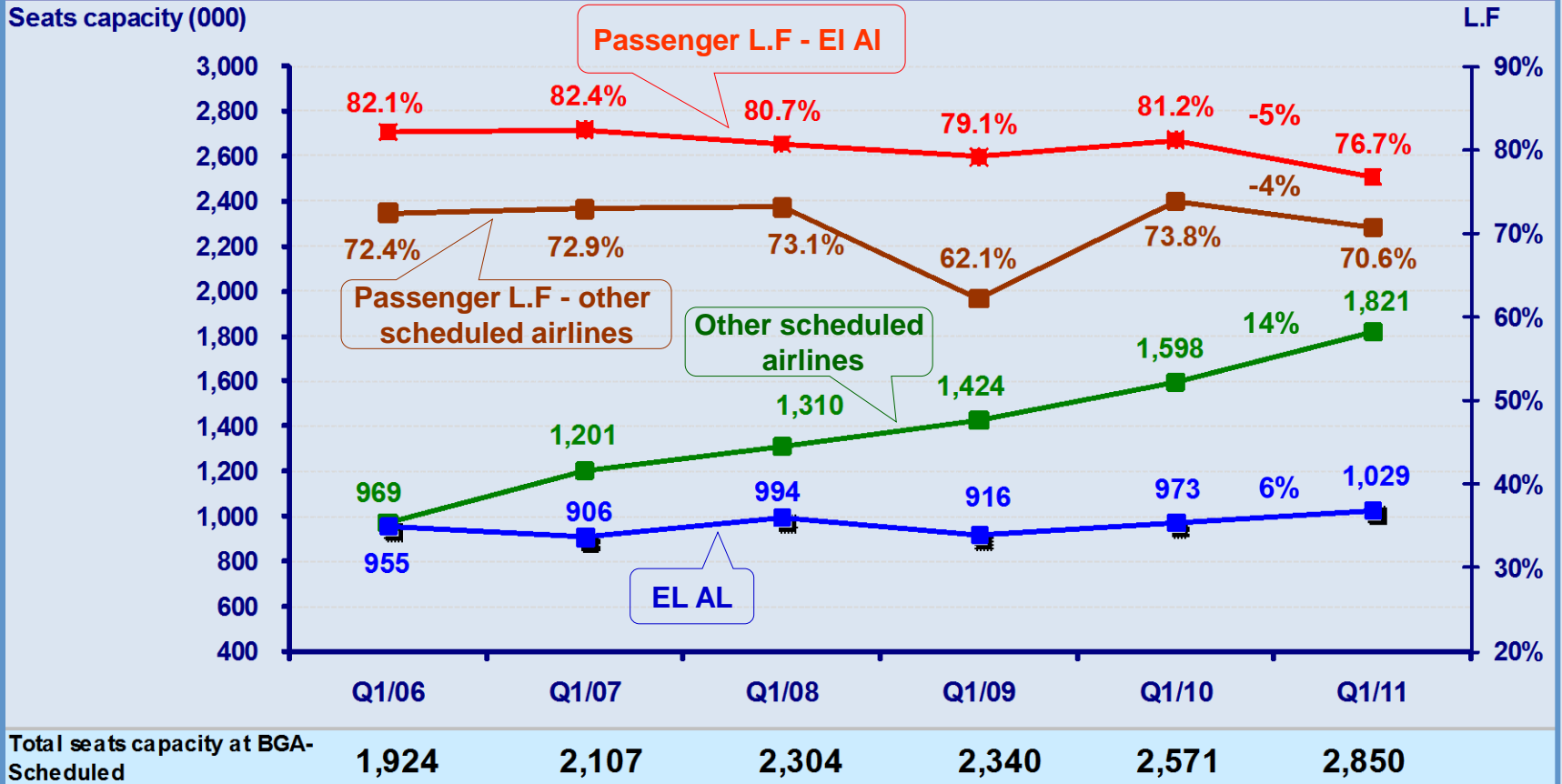
EL AL & Sun D'or share in total traffic (%)



Source of data: Commercial Planning & Market Research

Seats capacity and passenger load factor of scheduled airlines at Ben Gurion (*)

for quarter Q1 in years 2006-2011

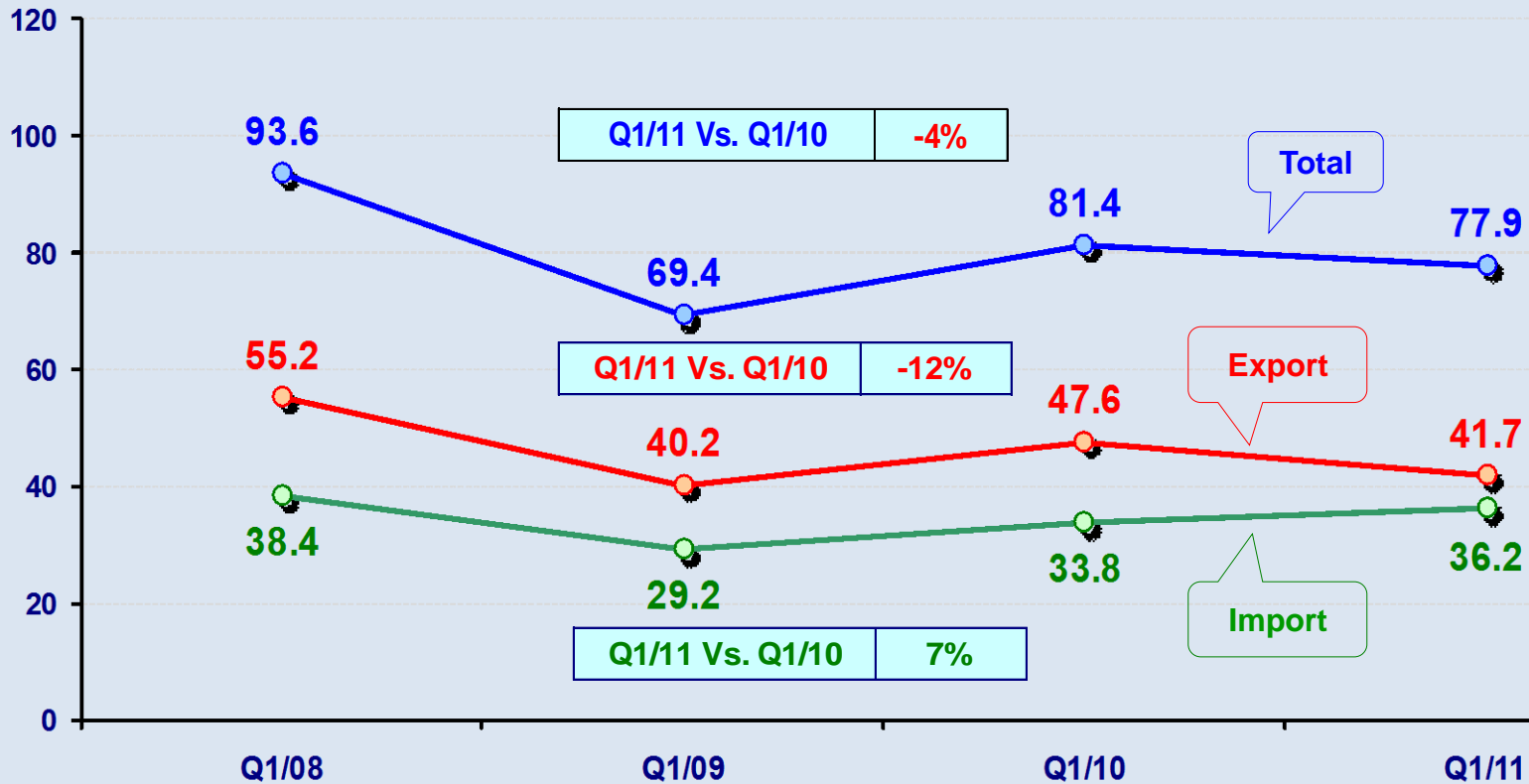


(*) LF of other scheduled airlines - Percentage of total passenger occupancy of available seats

Cargo traffic through BGN

for quarter Q1 in years 2008-2011

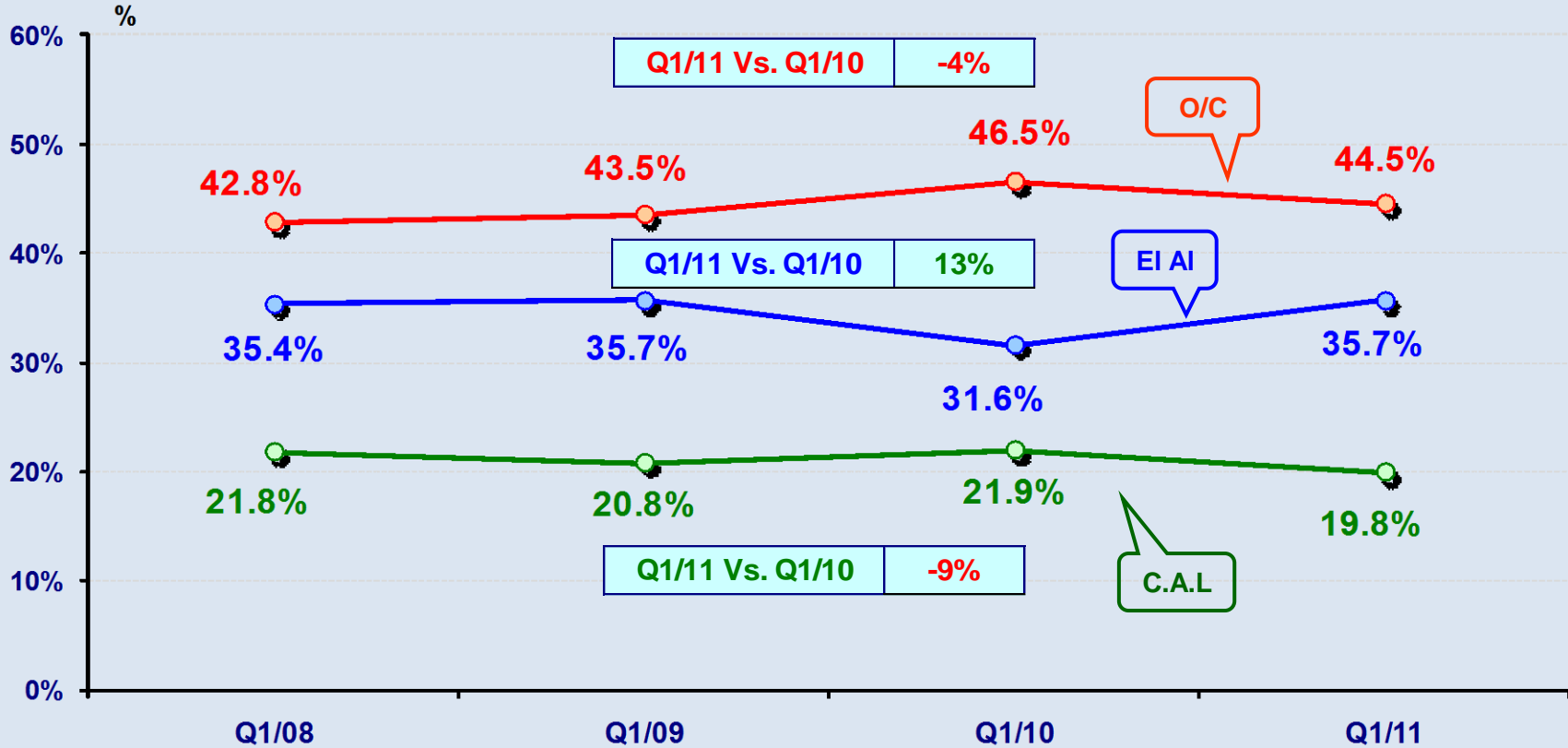
Thousands of Tons



Source: Cargo division, EL AL

Cargo market share at BGA

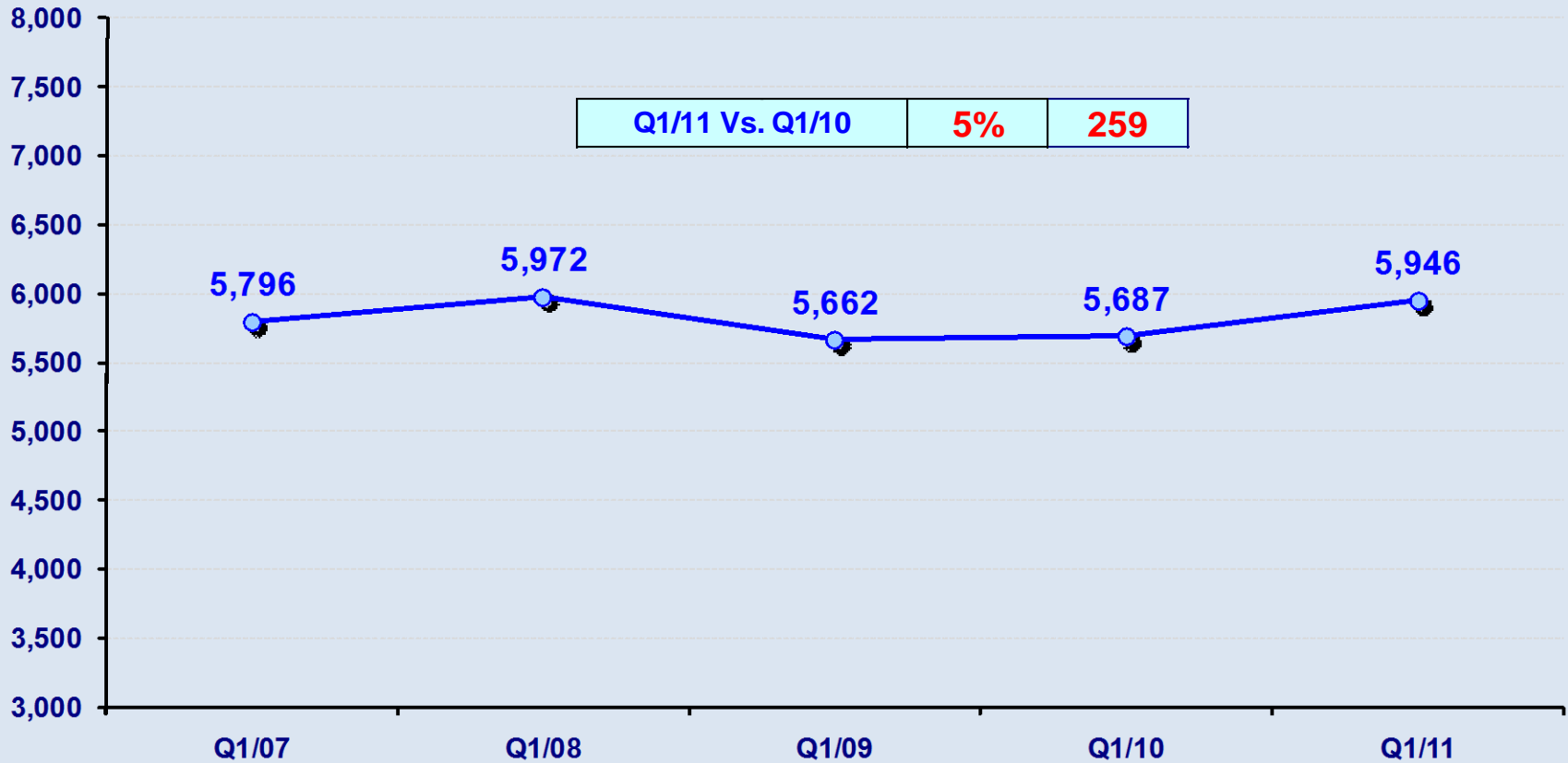
for quarter Q1 in years 2008-2011



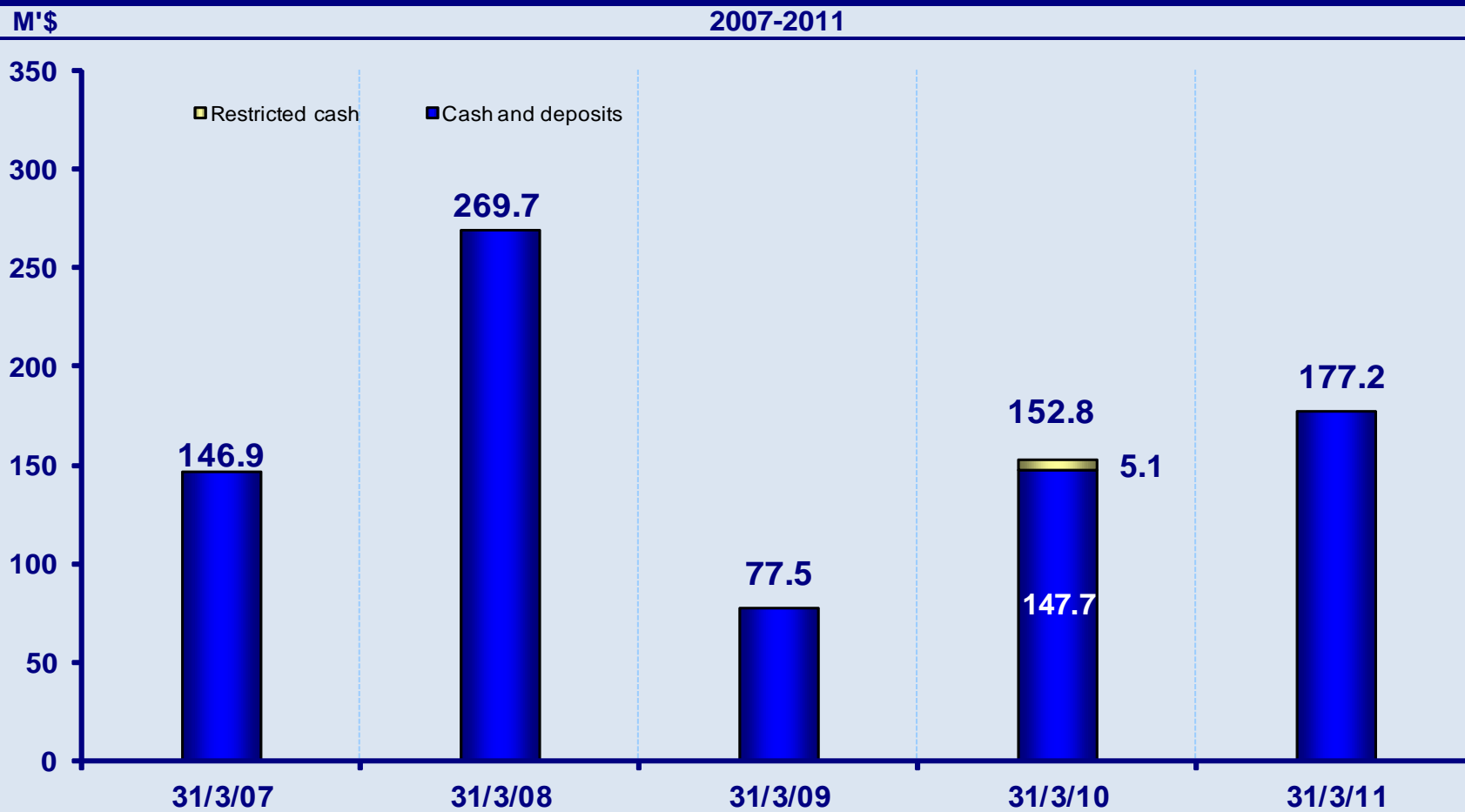
Excluding transit cargo

Total employees (positions, average)

for quarter Q1 in years 2007-2011

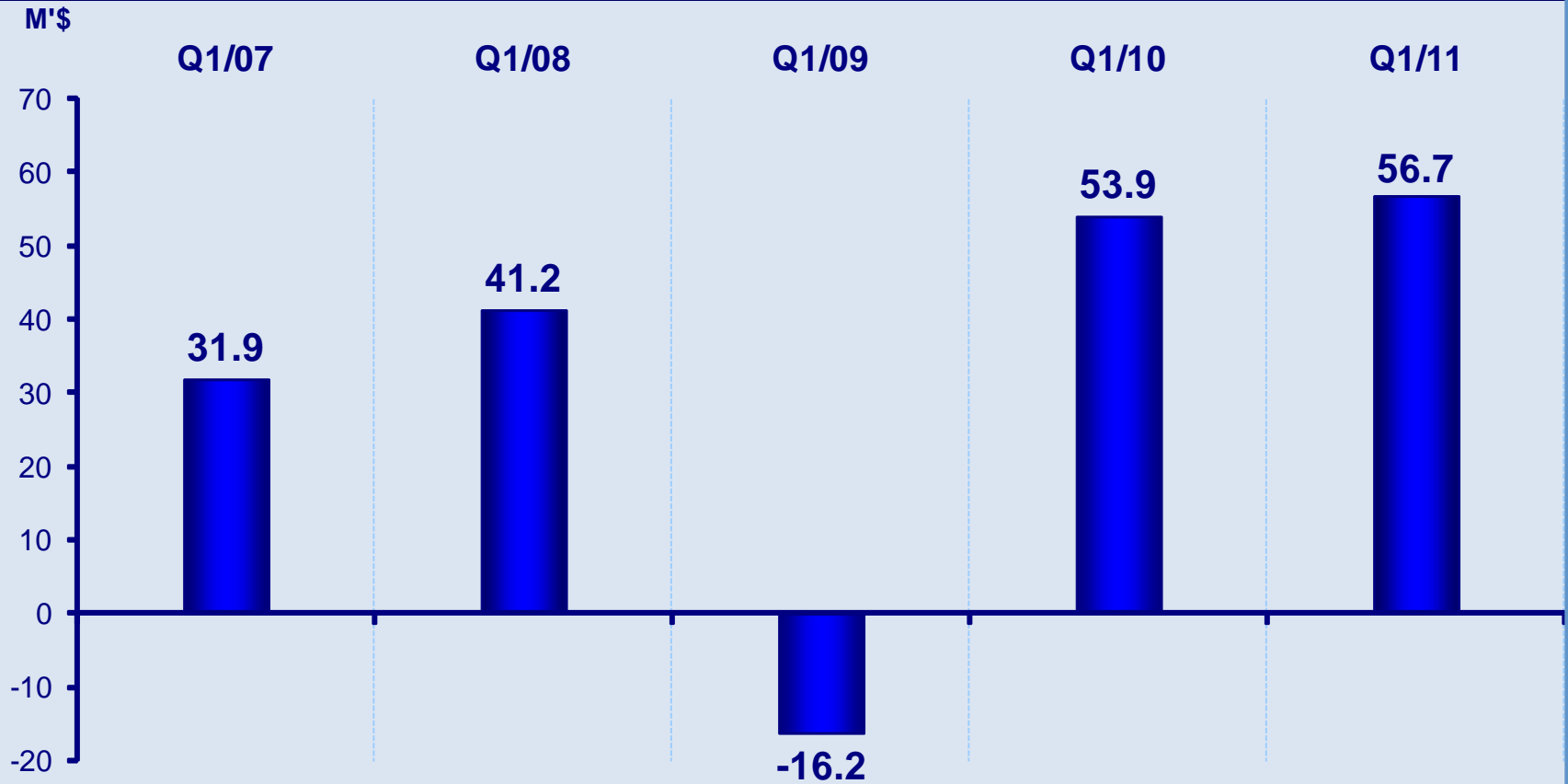


Cash balances, including deposits at March 31 (El Al solo)



Cash flows from operating activities

2007-2011



Balance sheet

(in millions USD)

Assets			Liabilities		
	31/03/2011	31/12/2010		31/03/2011	31/12/2010
Current assets	502	416	Current liabilities	868	732
Non-current assets	1,310	1,305	Long-term liabilities	713	741
			Share holders' equity	231	248
Total	1,812	1,721	Total	1,812	1,721

A woman in a white dress is seen from behind, standing in a vast field of golden wheat. She is holding a string that goes up to a white kite flying in a clear blue sky with scattered white clouds. The kite is a simple diamond shape with a tail.

Thank you.